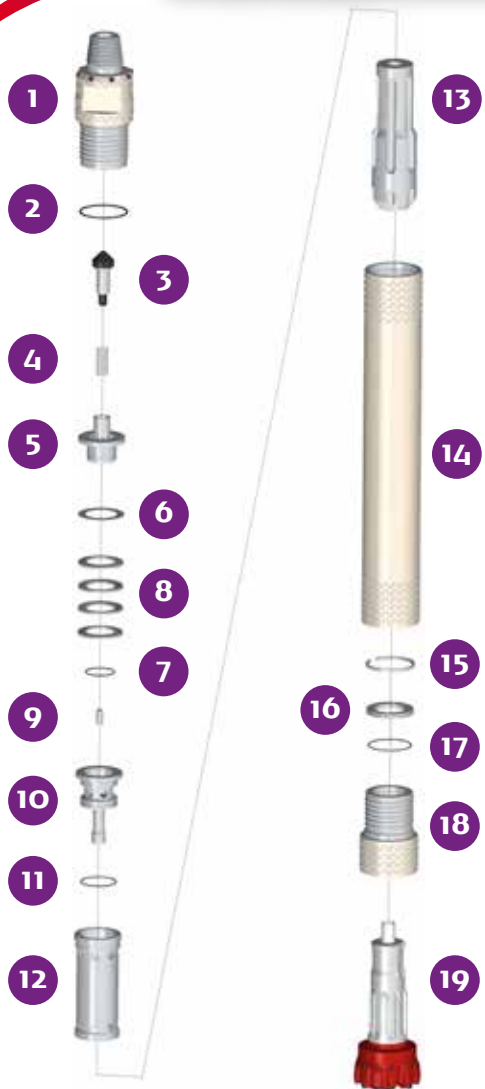


# PUMA 7.1 SD 8

HAMMER TYPE / HDWR (Heavy Duty Welding with Retractable Backhead) CODE / 0001070-050000



## SPARE PARTS

ITEM / DESCRIPTION	kg /	lb	CODE
1 HDWR Backhead 4 1/2" Beco Pin <sup>(1)</sup>	39.3	86.5	0101070-010000
2 Backhead O'Ring	0.0	0.0	C180010-002356
3 Check Valve Dart	0.9	2.1	0101080-030000
4 Spring	0.1	0.1	0101080-040000
5 Air Distributor	3.5	7.6	0101070-050000
6 Air Distributor O'Ring	0.0	0.0	C180010-002236
7 Make Up Ring Shim <sup>(2)</sup>	0.1	0.1	0101070-170000
8 Compression Disk (Qty:4)	1.8	4.0	0101070-060000
9 Choke <sup>(3)</sup>	0.0	0.0	0101080-070000
10 Air Guide	4.8	10.5	0101070-080000
11 Air Guide O'Ring	0.0	0.0	C180010-002242
12 Cylinder	6.4	14.0	0101070-100000
13 Piston	31.4	69.1	0101070-120000
14 HDW Wear Sleeve	70.0	154.0	0101070-110002
15 Piston Retainer Ring	0.1	0.1	0101070-130000
16 Bit Retainer	1.0	2.2	0101070-140000
17 Bit Retainer O'Ring	0.0	0.0	C180010-002249
18 HDW Chuck SD 8	18.4	40.5	0101070-160002
19 Bit SD 8	-	-	-

(1) Other thread types can be delivered at request.  
 (2) Not installed in new hammers.  
 (3) Open plugs are available.  
 HDW: Heavy Duty Welding

## GENERAL DESCRIPTION

NET WEIGHT		OUTSIDE DIAMETER		HAMMER LENGTH		HAMMER LENGTH WITH BIT			
kg	lb	mm	in	mm	in	CLOSED BIT		EXTENDED BIT	
178	391	176	6.92	1358	53.5	1488	58.6	1533	60.3

AIR CONSUMPTION												
PRESSURE	psig	150	200	250	300	350	bar <sub>g</sub>	10.3	13.8	17.2	20.7	24.1
VOLUME	SCFM	480	685	890	1090	1290	m <sup>3</sup> /min	13.6	19.4	25.2	30.9	36.5