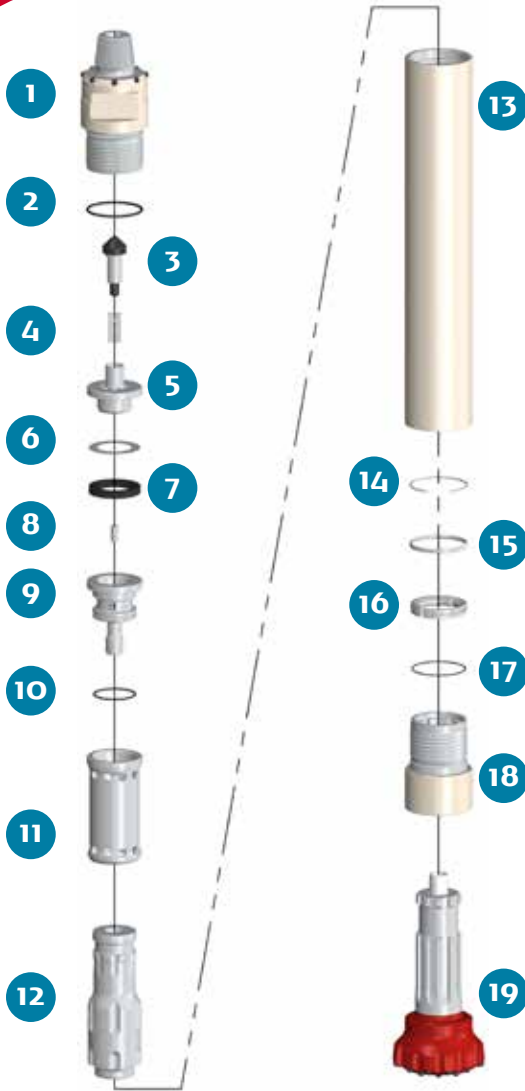


# PUMA 8.1 DHD 380

HAMMER TYPE / HDR WA (Heavy Duty with retractile backhead) CODE / 0001080-040004



## SPARE PARTS

ITEM / DESCRIPTION	kg	lb	CODE
1 HDR Backhead 4 1/2" Reg. Pin <sup>(1)(2)</sup>	4,8	9,9	0101080-010022
2 Backhead O'Ring	0,0	0,0	C180010-002434
3 Check Valve Dart	0,9	2,1	0101080-030000
4 Spring	0,1	0,1	0101080-040000
5 Air Distribuidor	4,3	9,5	0101080-050000
6 Make Up Ring Shim <sup>(3)</sup>	0,1	0,1	0101080-180000
7 Make up Ring	0,2	0,4	0101080-060000
8 Choke <sup>(4)</sup>	0,0	0,0	0101080-070000
9 Air Guide	6,7	14,7	0101080-080000
10 Air Guide O'Ring	0,0	0,0	C180010-002347
11 Water Cylinder <sup>(5)</sup>	8,1	17,8	0101080-100001
12 Water Piston DHD 380 <sup>(5)</sup>	35,0	77,0	0101080-120008
13 HD Wear Sleeve	73,0	160,6	0101080-110002
14 Piston Retainer Ring	0,1	0,1	0101080-190000
15 Flat Stop Ring	0,2	0,4	0101080-130000
16 Bit Retainer DHD 380	1,4	3,1	0101080-150002
17 Bit Retainer O'Ring	0,0	0,0	C180010-002255
18 HD Chuck DHD 380	20,2	44,4	0101080-170020
19 Bit DHD 380	-	-	-

(1) Other thread types can be delivered at request.

(2) With retractile insert (ø186 mm-7,3" between inserts).

(3) Not installed in new hammers.

(4) Open plugs are available.

(5) Adapted to work under water (WA).

HD: Heavy Duty; HDR: HD with retractile backhead.

## GENERAL DESCRIPTION

NET WEIGHT		OUTSIDE DIAMETER		HAMMER LENGTH		HAMMER LENGTH WITH BIT			
						CLOSED BIT		EXTENDED BIT	
kg	lb	mm	in	mm	in	mm	in	mm	in
192	423	185 <sup>(2)</sup>	7.28 <sup>(2)</sup>	1302	51.3	1431	56.3	1482	58.3

AIR CONSUMPTION												
PRESSURE	psig	150	200	250	300	350	barg	10.3	13.8	17.2	20.7	24.1
VOLUME	SCFM	530	735	950	1170	1390	m <sup>3</sup> /min	15.0	20.8	26.9	33.1	39.3