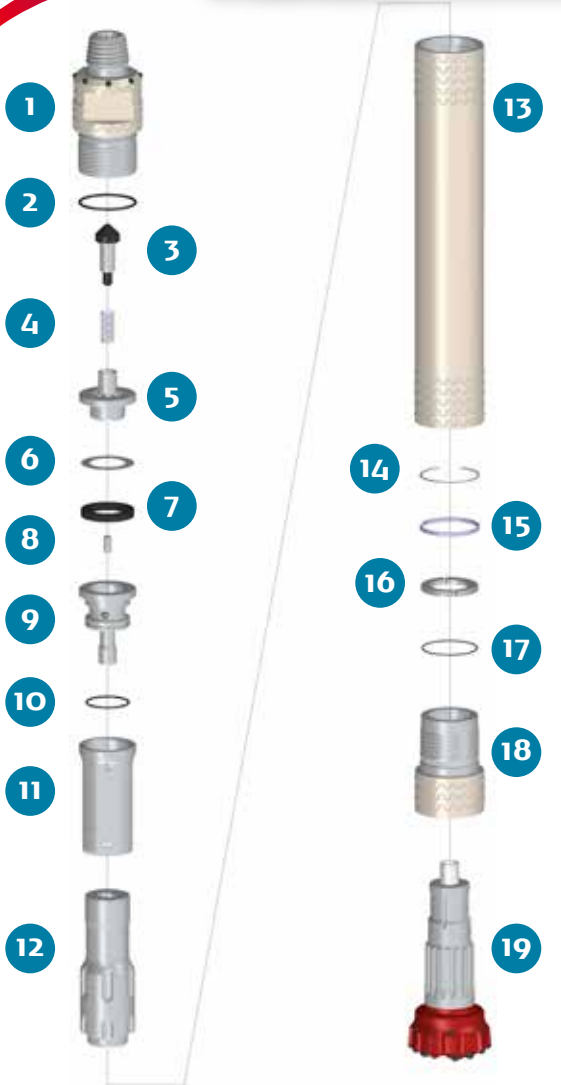


PUMA 8.1 P8.1 16 SP

HAMMER TYPE / HDWR (Heavy Duty Welding with Retractable Backhead) CODE / 0001080-050024



SPARE PARTS

ITEM / DESCRIPTION	kg /	lb	CODE
1 HDWR Backhead 4 1/2" API Req. Pin ⁽¹⁾	41.8	91.9	0101080-010001
2 Backhead O'Ring	0.0	0.0	C180010-002434
3 Check Valve Dart	0.9	2.1	0101080-030000
4 Spring	0.1	0.1	0101080-040000
5 Air Distributor	4.3	9.5	0101080-050000
6 Make Up Ring Shim ⁽²⁾	0.1	0.1	0101080-180000
7 Make Up Ring	0.2	0.4	0101080-060000
8 Choke ⁽³⁾	0.0	0.0	0101080-070000
9 Air Guide	6.7	14.7	0101080-080000
10 Air Guide O'Ring	0.0	0.0	C180010-002347
11 Cylinder	9.5	20.9	0101080-100000
12 Piston	35.4	77.8	0101080-120000
13 HDW Wear Sleeve	74.0	162.8	0101080-110001
14 Piston Retainer Ring	0.1	0.1	0101080-190000
15 Flat Stop Ring	0.2	0.4	0101080-130000
16 Bit Retainer	1.0	2.3	0101080-150000
17 Bit Retainer O'Ring	0.0	0.0	C180010-002255
18 HDW Chuck - 16 SP	20.0	44.0	0101080-170025
19 Bit P8.1 16 SP	-	-	-

(1) Other thread types can be delivered at request.

(2) Not installed in new hammers.

(3) Open plugs are available.

HDW: Heavy Duty Welding

16 SP: 16 Splines

GENERAL DESCRIPTION

NET WEIGHT		OUTSIDE DIAMETER		HAMMER LENGTH		HAMMER LENGTH WITH BIT			
kg	lb	mm	in	mm	in	CLOSED BIT		EXTENDED BIT	
190	419	188	7.4	1306	51.4	mm	in	mm	in
						1435	56.5	1486	58.5

AIR CONSUMPTION												
PRESSURE	psig	150	200	250	300	350	barg	10.3	13.8	17.2	20.7	24.1
VOLUME	SCFM	530	735	950	1170	1390	m ³ /min	15.0	20.8	26.9	33.1	39.3