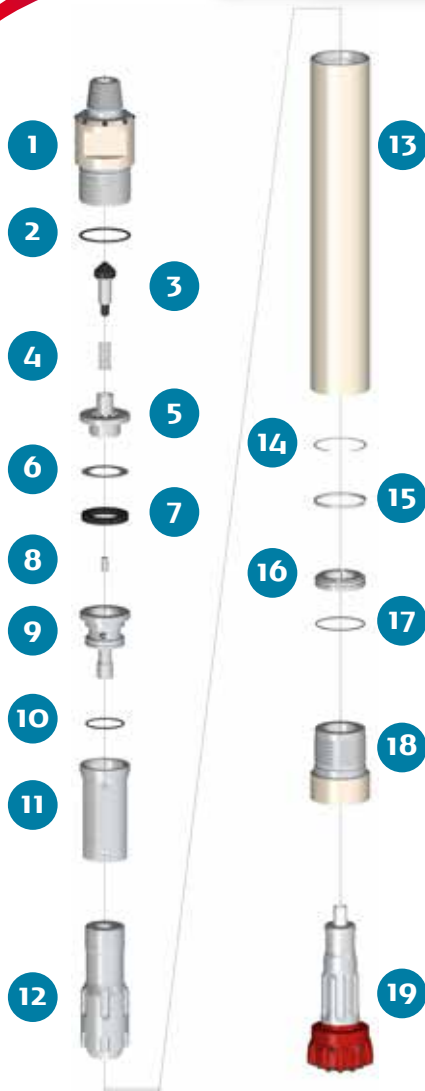


# PUMA 8.1 SD 8

HAMMER TYPE / SR (Standard with Retractable Backhead) CODE / 0001080-030003



## SPARE PARTS

ITEM / DESCRIPTION	kg	lb	CODE
1 R. Backhead 4 1/2" Req. Pin <sup>(1)</sup>	41.1	90.4	0101080-010002
2 Backhead O'Ring	0.0	0.0	C180010-002434
3 Check Valve Dart	0.9	2.1	0101080-030000
4 Spring	0.1	0.1	0101080-040000
5 Air Distributor	4.3	9.5	0101080-050000
6 Make up Ring Shim <sup>(2)</sup>	0.1	0.1	0101080-180000
7 Make up Ring	0.2	0.4	0101080-060000
8 Choke <sup>(3)</sup>	0.0	0.0	0101080-070000
9 Air Guide	6.7	14.7	0101080-080000
10 Air Guide O'Ring	0.0	0.0	C180010-002347
11 Cylinder	9.5	20.9	0101080-100000
12 Piston SD 8	35.4	77.8	0101080-120001
13 Wear Sleeve	61.0	134.2	0101080-110000
14 Piston Retainer Ring	0.1	0.1	0101080-190000
15 Flat Stop Ring	0.2	0.4	0101080-130000
16 Bit Retainer SD 8	2.3	5.1	0101080-150001
17 Bit Retainer O'Ring	0.0	0.0	C180010-002255
18 Chuck SD 8	19.0	41.8	0101080-170003
19 Bit SD 8	-	-	-

(1) Other thread types can be delivered at request.  
 (2) Not installed in new hammers.  
 (3) Open plugs are available.  
 R: Retractable.

## GENERAL DESCRIPTION

NET WEIGHT		OUTSIDE DIAMETER		HAMMER LENGTH		HAMMER LENGTH WITH BIT			
kg	lb	mm	in	mm	in	CLOSED BIT		EXTENDED BIT	
181	398	180	7.08	1272	50.1	mm	in	mm	in
						1401	55.1	1451	57.1

AIR CONSUMPTION												
PRESSURE	psig	150	200	250	300	350	barg	10.3	13.8	17.2	20.7	24.1
VOLUME	SCFM	530	735	950	1170	1390	m <sup>3</sup> /min	15.0	20.8	26.9	33.1	39.3