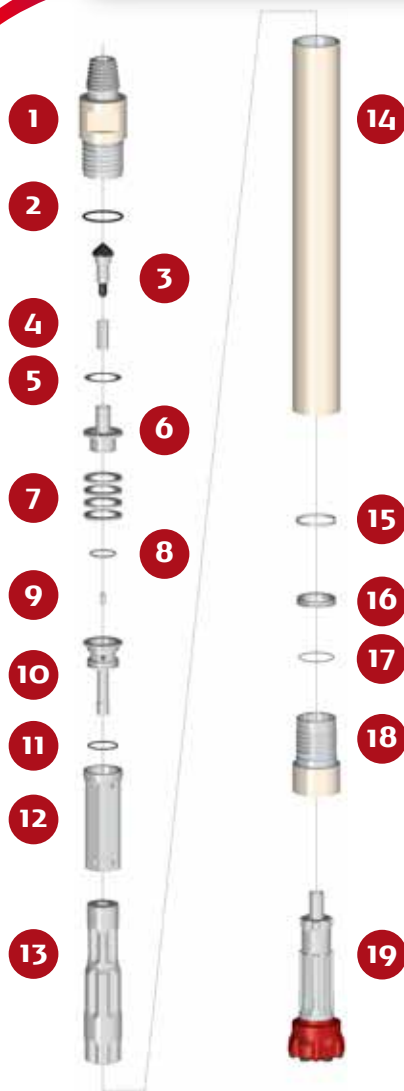


# PUMA M5.2 DHD 350

HAMMER TYPE / S (Standard) CODE / 0006050-000007



## SPARE PARTS

ITEM / DESCRIPTION	kg	lb	CODE
1 Backhead 3 1/2" API Reg. Pin <sup>(1)</sup>	11.7	25.6	0101050-010000
2 Backhead O'Ring	0.0	0.0	C180010-002341
3 Check Valve Dart	0.4	0.9	0101050-030000
4 Spring	0.1	0.1	0101050-040000
5 Make Up Ring Shim <sup>(2)</sup>	0.1	0.1	0101050-180000
6 Air Distributor	1.2	2.6	0106050-050000
7 Compression Disk (Qty.4)	0.7	1.5	0106050-060000
8 Air Distributor O'Ring	0.0	0.0	C180010-002141
9 Choke <sup>(3)</sup>	0.0	0.0	0101050-070000
10 Air Guide	1.7	3.8	0106050-080001
11 Air Guide O'Ring	0.0	0.0	C180010-002231
12 Cylinder	2.7	6.0	0106050-100000
13 Piston DHD 350	14.2	31.2	0106050-120011
14 Wear Sleeve	24.4	53.7	0106050-110000
15 Piston Retainer Ring	0.2	0.4	0106050-140000
16 Bit Retainer DHD 350	0.3	0.7	0106050-150000
17 Bit Retainer O'Ring	0.0	0.0	C180010-002236
18 Chuck DHD 350	4.6	10.2	0106050-170001
19 Bit DHD 350	-	-	-

(1) Other thread types can be delivered at request.  
 (2) Not installed in new hammers.  
 (3) Open plugs are available.

## GENERAL DESCRIPTION

NET WEIGHT		OUTSIDE DIAMETER		HAMMER LENGTH		HAMMER LENGTH WITH BIT			
kg	lb	mm	in	mm	in	CLOSED BIT		EXTENDED BIT	
						mm	in	mm	in
63	137	115	4.52	1093	43	1188	46.7	1225	48.2

AIR CONSUMPTION												
PRESSURE	psig	150	200	250	300	350	bar <sub>g</sub>	10.3	13.8	17.2	20.7	24.1
VOLUME	SCFM	310	425	542	660	775	m <sup>3</sup> /min	8.8	12.0	15.4	18.7	22.0