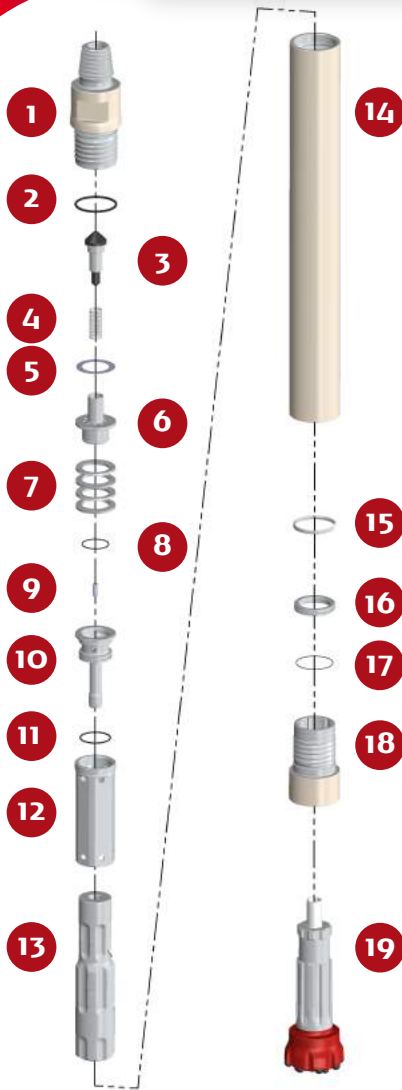
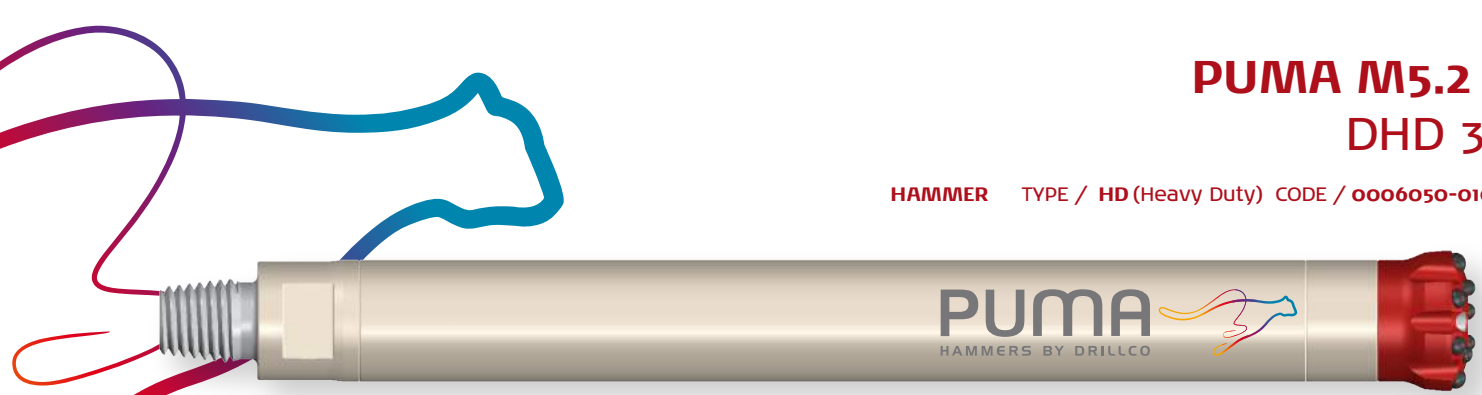


PUMA M5.2 HV DHD 350

HAMMER TYPE / HD (Heavy Duty) CODE / 0006050-010005



SPARE PARTS

ITEM / DESCRIPTION	kg	lb	CODE
1 HD Backhead 3 1/2" API Reg. Pin ⁽¹⁾	11.4	25.1	0101050-010026
2 Backhead O'Ring	0.0	0.0	C180010-002341
3 Check Valve Dart	0.4	0.9	0101050-030000
4 Spring	0.1	0.1	0101050-040000
5 Make Up Ring Shim ⁽²⁾	0.1	0.1	0101050-180000
6 Air Distributor	1.2	2.6	0106050-050000
7 Compression Disk (Qty.4)	0.7	1.5	0106050-060000
8 Air Distributor O'Ring	0.0	0.0	C180010-002141
9 Choke ⁽³⁾	0.0	0.0	0101050-070000
10 Air Guide	1.7	3.8	0106050-080001
11 Air Guide O'Ring	0.0	0.0	C180010-002231
12 Cylinder	2.7	6.0	0106050-100000
13 HV Piston DHD 350	14.2	31.2	0106050-120016
14 HD Wear Sleeve	28.4	62.5	0106050-110002
15 Piston Retainer Ring	0.2	0.4	0106050-140000
16 Bit Retainer DHD 350	0.3	0.7	0106050-150000
17 Bit Retainer O'Ring	0.0	0.0	C180010-002236
18 HD Chuck DHD 350	5.0	10.9	0106050-170004
19 Bit DHD 350	-	-	-

(1) Other thread types can be delivered at request.

(2) Not installed in new hammers.

(3) Different Choke size are available.

HV High consumption

HD Heavy Duty

GENERAL DESCRIPTION

NET WEIGHT		OUTSIDE DIAMETER		HAMMER LENGTH		HAMMER LENGTH WITH BIT			
kg	lb	mm	in	mm	in	CLOSED BIT		EXTENDED BIT	
67	146	118	4.64	1093	43	mm	in	mm	in
						1188	46.7	1225	48.2

AIR CONSUMPTION												
PRESSURE	psig	150	200	250	300	350	barg	10.3	13.8	17.2	20.7	24.1
VOLUME	SCFM	328	471	614	757	900	m ³ /min	9.3	13.3	17.4	21.4	25.4

Check. 09/2016