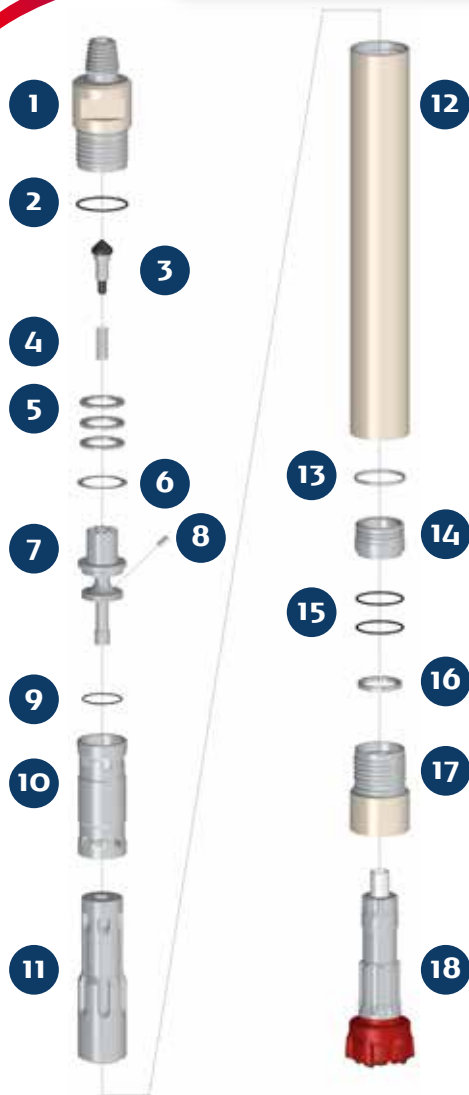


PUMA M6.2 DHD 360

HAMMER TYPE / S (Standard) CODE / 0006060-000021



SPARE PARTS

ITEM / DESCRIPTION	kg /	lb	CODE
1 Backhead 3 1/2" API Reg. Pin ⁽¹⁾	17.7	38.9	0106060-010008
2 Backhead O'Ring	0.0	0.0	C180010-002349
3 Check Valve Dart	0.4	0.9	0101050-030000
4 Spring	0.1	0.1	0101060-040000
5 Compression Disk (Qty:3)	0.8	1.7	0106060-060003
6 Make Up Ring Shim ⁽²⁾	0.1	0.1	0101060-180000
7 Air Guide	4.3	9.5	0106060-080002
8 Choke ⁽³⁾	0.0	0.0	0101050-070000
9 Air Guide O'Ring	0.0	0.0	C180010-002238
10 Cylinder	4.4	9.7	0106060-100003
11 Piston DHD 360	22.8	50.2	0106060-120005
12 Wear Sleeve	32.4	71.2	0106060-110005
13 Piston Retainer Ring	0.1	0.1	0101060-130001
14 Bit Guide DHD 360	2.0	4.4	0106060-140004
15 Bit Guide O'Ring (Qty:2)	0.0	0.0	C180010-002346
16 Bit Retainer DHD 360	0.3	0.6	0101060-150002
17 Chuck DHD 360	9.2	20.2	0106060-170017
18 Bit DHD 360	-	-	-

(1) Other thread types can be delivered at request.
 (2) Not installed in new hammers.
 (3) Open plugs are available.

GENERAL DESCRIPTION

NET WEIGHT		OUTSIDE DIAMETER		HAMMER LENGTH		HAMMER LENGTH WITH BIT			
						CLOSED BIT		EXTENDED BIT	
kg	lb	mm	in	mm	in	mm	in	mm	in
95	209	141.5	5.57	1151.2	45.3	1256	49.4	1296	51.0

AIR CONSUMPTION												
PRESSURE	psig	150	200	250	300	350	bar _g	10.3	13.8	17.2	20.7	24.1
VOLUME	SCFM	290	450	610	760	895	m ³ /min	8.2	12.7	17.3	21.5	25.3