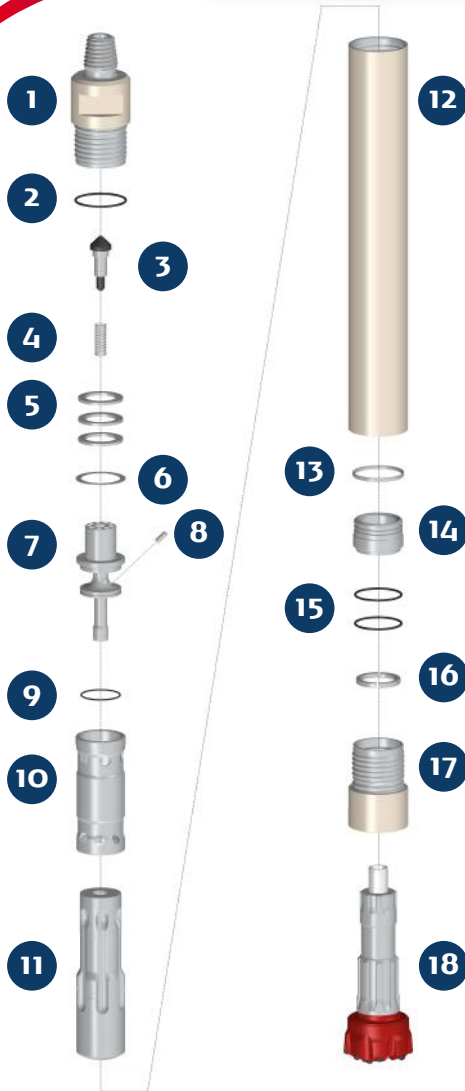


PUMA M6.2 HV DHD 360

HAMMER TYPE / S (Standard) CODE / 0006060-000035



SPARE PARTS

ITEM / DESCRIPTION	kg	lb	CODE
1 Backhead 3 1/2" API Reg. Pin ⁽¹⁾	17.7	38.9	0106060-010008
2 Backhead O'Ring	0.0	0.0	C180010-002349
3 Check Valve Dart	0.4	0.9	0101050-030000
4 Spring	0.1	0.1	0101060-040000
5 Compression Disk (Qty:3)	0.8	1.7	0106060-060003
6 Make Up Ring Shim ⁽²⁾	0.1	0.1	0101060-180000
7 Air Guide	4.3	9.5	0106060-080002
8 Choke ⁽³⁾	0.0	0.0	0101050-070000
9 Air Guide O'Ring	0.0	0.0	C180010-002238
10 Cylinder	4.4	9.7	0106060-100003
11 HV Piston DHD 360	22.8	50.2	0106060-120028
12 Wear Sleeve	32.4	71.2	0106060-110005
13 Piston Retainer Ring	0.1	0.1	0101060-130001
14 Bit Guide DHD 360	2.0	4.4	0106060-140004
15 Bit Guide O'Ring (Qty:2)	0.0	0.0	C180010-002346
16 Bit Retainer DHD 360	0.3	0.6	0101060-150002
17 Chuck DHD 360	9.2	20.2	0106060-170017
18 Bit DHD 360	-	-	-

(1) Other thread types can be delivered at request.
 (2) Not installed in new hammers.
 (3) Different Choke size are available.
 HV High Consumption

GENERAL DESCRIPTION

NET WEIGHT		OUTSIDE DIAMETER		HAMMER LENGTH		HAMMER LENGTH WITH BIT			
kg	lb	mm	in	mm	in	CLOSED BIT		EXTENDED BIT	
95	209	141.5	5.57	1151	45.3	1256	49.4	1296	51.0

AIR CONSUMPTION												
PRESSURE	psig	150	200	250	300	350	barg	10.3	13.8	17.2	20.7	24.1
VOLUME	SCFM	340	558	722	886	1050	m ³ /min	9.7	15.8	20.5	25.2	29.8

Check. 09/2016